

INTER-AGENCY REGIONAL RESPONSE FOR SYRIAN REFUGEES

Egypt, Iraq, Jordan, Lebanon, Turkey

3 - 9 October 2013



This update provides a snapshot of the inter-agency regional humanitarian response in full coordination with host Governments and 126 partners across the region. Published weekly on Thursday, the next update will be available on 17 October 2013.

REGIONAL HIGHLIGHTS

- Sixteen countries are currently participating in the resettlement or humanitarian admission efforts for Syrian refugees, offering about 10,000 places so far. UNHCR will assess refugees and refer the most vulnerable cases to host countries for relocation, which will most likely take place predominantly throughout 2014.
- With winter approaching, humanitarian organizations across the region are focusing on planning and preparation of winterization aid. Refugees living in sub-standard shelters and at high altitudes are particularly vulnerable.
- Lebanon - Targeted food distribution has begun in Beirut, Mount Lebanon, south Lebanon and the Bekaa valley. Targeting is based on the results of the vulnerability assessment carried out by WFP, UNICEF and UNHCR in May and June and UNHCR's registration data. Food distribution is now targeted to those most vulnerable including those with no other means of food support and includes 72 per cent of the registered refugee population.
- Iraq - A new refugee camp, Darashakran, has begun receiving some of the tens of thousands of Syrians who arrived in the Kurdistan region in recent months.

IN THIS ISSUE

- UNRWA: Providing assistance to Palestinian refugees fleeing Syria, p.2
- Jordan: Registration backlog cleared, p.2
- Iraq: New camp in Kurdistan Region starts receiving recent arrivals, p.3
- Longer-term solutions needed as crisis continues to evolve, p.3
- Inter-agency joint efforts to improve health coverage, p.4

REGIONAL FIGURES

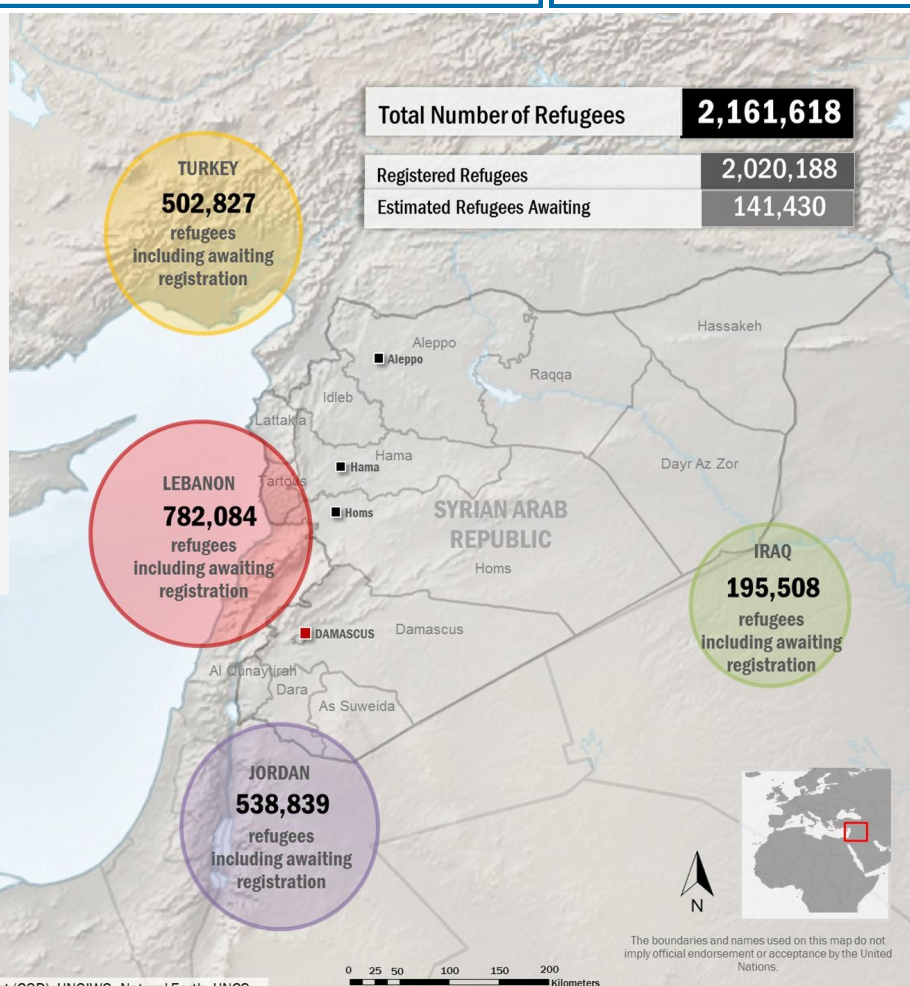
2.1 million refugees fleeing Syria have sought protection in neighbouring countries

1.1 million children estimated to be affected by the crisis

45,000 Palestine refugees have fled Syria to Lebanon and **9,105** to Jordan*

53% funding gap in the Syria Regional Response Plan

* UNRWA



Sources | UNHCR Regional Datawarehouse, Common Operational Dataset (COD), UNGIWG, Natural Earth, UNCS

Refugee population as of 8 October 2013, based on available data. For updated figures, please visit <http://data.unhcr.org/syrianrefugees>

UNRWA: Providing assistance to Palestinian refugees fleeing Syria

- UNRWA estimates that 63,500 Palestine refugees from Syria (PRS) have fled to neighbouring countries, of which 45,000 have fled to Lebanon and 9,105 to Jordan.
- Lebanon – PRS are residing in all parts of the country, with higher concentrations in the South and Beqaa. **Shelter:** UNRWA has rehabilitated 13 collective shelters in the South for 132 families, approved five more shelter rehabilitations and is carrying out rehabilitation works in nine shelters for 61 families. Seven more rehabilitation requests are under assessment. **Health:** Medical consultations and medications continued to be delivered through UNRWA's 28 health centres, covering 50 per cent of tertiary emergency and life-saving conditions. **Protection:** UNRWA is providing advice and assistance to PRS crossing the border and advocating for equal treatment for all refugees. **Core relief:** Preparations for winter distributions is underway. **Education:** More than 6,000 PRS children are attending UNRWA schools this academic year, of which 20 per cent are integrated into UNRWA's regular classes for Palestinian refugees. Some 200 additional teaching staff and new psycho-social counselors have been recruited and trained.
- Jordan - Most PRS in Jordan reside in communities with host families or in rental premises mainly in Irbid, Zarqa and Amman. Over half of the PRS population in Jordan is female and 30 per cent are female-headed households. A large number are assessed to live in abject poverty. **Health:** UNRWA is providing free primary health care to PRS in all UNRWA clinics and referrals with full coverage to government hospitals. **Core relief:** items for up to 5,000 new PRS are being prepositioned and approximately 1,000 PRS families will receive mattresses, blankets, hygiene kits, kitchen sets, lanterns, buckets, towels, tarpaulins and high energy biscuits. **Education:** Around 800 PRS children have enrolled in UNRWA schools since the start of the school year.



Around 200 Palestinian refugees from Syria are living in Cyber City, Jordan.
UNRWA | A. Ghosheh

Jordan: registration backlog cleared

- UNHCR has reduced the waiting time for Syrians to register as refugees in Jordan to mere hours following the rollout of new technology, additional staff and expanded facilities to eliminate the backlog.
- Earlier this year, the daily arrival rate in Jordan reached 2,000 people and required staff to work multiple shifts every day while taxing the patience of exhausted refugees.
- In response, UNHCR prioritized registration systems and staffing needs to address the unacceptable delays. The registration and document renewal process are now completed within hours at Jordan's urban refugee registration facilities. The more efficient process is also expected to lower the previous no-show rate of approximately 10 per cent as registration becomes a less time consuming task for refugees.
- The Irbid registration centre now has the capacity to process 1,300 individual refugees a day and uses biometric iris scanning to streamline the registration process and minimize the risk of fraud through double registration. Moreover, more detailed information can be collected and better inform response partners on the immediate and longer-term protection needs of Syrian refugees.
- The new Amman registration centre, which opened in July, can process up to 3,000 refugees a day - triple the capacity of UNHCR's previous facility.
- UNHCR is also continuing to reach out to refugees who cannot access registration at the dedicated sites. A mobile registration unit operates to register and issue documentation to refugees in remote locations.

Iraq: New camp in Kurdistan Region starts receiving recent arrivals

- A new refugee camp in northern Iraq, Darashakran, has begun receiving some of the tens of thousands of Syrians who arrived in recent months. The camp is located in Erbil governorate and built by UNHCR with the support of the Kurdistan Regional Government, UN organizations and NGO partners.
- UNHCR plans to move about 50 families a day (300 people) to Darashakran, which can accommodate up to 10,000 people and could be later expanded to double in capacity. Each family being transferred to the purpose-built camp is receiving a shelter unit that includes an all-weather tent; separate latrine; bathing area; and cooking space to ensure privacy. So far some 2,000 shelters have been erected.
- The new facility was needed as the only other permanent refugee camp in northern Iraq, Domiz in Dohuk governorate, was severely overcrowded. Built in April 2012 to provide shelter for 30,000 people, it currently hosts 45,000 Syrians.
- There are currently close to 200,000 Syrian refugees in Iraq, the vast majority (95 per cent) of whom are hosted in the Kurdistan Region. More than 50,000 people crossed into the Kurdistan Region from Syria in August. With the help of local authorities, temporary sites were prepared to cope with the sudden inflow, including at Kawergosk (12,000 refugees), Qushtapa (3,000) and Basirma (2,500). Some 40,000 other recently arrived Syrian refugees are sheltered in other makeshift sites.
- Darashakran includes community space for psycho-social counselling and an employment centre where residents can learn about jobs in the neighbouring community. All the necessary food distribution facilities, roads, water and sanitation systems have been installed as well as adequate lighting in all public areas.



More than 50,000 Syria refugees have fled to the Kurdistan Region of northern Iraq since mid-August. UNHCR | G. Gubaeva

Longer term solutions needed for Syria refugees as crisis continues to evolve

- UNHCR has been working closely with states to provide resettlement or humanitarian admission as part of the broader protection response to refugees who have fled from Syria to neighbouring countries. These interventions are critical for refugees who are in urgent need of protection.
- UNHCR has proposed to submit up to 30,000 Syria refugees for resettlement or humanitarian admission by the end of 2014, focusing upon the most vulnerable, such as survivors of violence and torture, women and girls at risk, refugees with serious medical conditions, and other refugees at risk.
- States are encouraged to offer places for Syrian refugees in addition to their current resettlement quotas to ensure that resettlement opportunities continue to be available for refugees from the rest of the world. To date, more than a dozen countries have offered a total of some 10,000 places for either resettlement or humanitarian admission of Syrian refugees, and UNHCR has already referred nearly 1,200 individuals to states for their consideration.
- A core group of resettlement countries is being established to promote multilateral and multiannual commitments to the resettlement of Syrian refugees and to strategize ways to enhance the effectiveness of the programme. At the same time, UNHCR is coordinating with host countries to regularly exchange information on progress towards increasing opportunities for the resettlement and humanitarian admission of Syrian refugees.
- Currently, 16 countries participating in the Syria resettlement/ Humanitarian Admission Programme efforts: Australia; Austria; Canada; Finland; France; Germany; Hungary; Ireland; Luxembourg; Moldova; Netherlands; Norway; Spain; Sweden; Switzerland; and the United States of America.

Inter-agency joint efforts to improve health coverage

- **Iraq** - Essential health services continued in the permanent refugee camps in Domiz (Dohuk Governorate) and Al-Qa'im (Anbar Governorate). WHO is providing assistance to refugees accommodated in temporary sites established in the Kurdistan Region. WHO, MSF and other UN agencies conducted inter-agency joint assessments in Erbil to address the lack of obstetric care and immunization services, as and the low quality of sanitation. WHO also delivered medicines, emergency health kits and water quality testing/monitoring kits for diarrhoea to the Department of Health, Dohuk. A three-day training on protection, health, nutrition and food security services was conducted in Erbil by the Ministry of Health, WHO and UNHCR.
- **Jordan** - WHO in collaboration with Columbia University conducted a six-day training on Inter-personal Therapy for 21 mental health professionals from the Ministry of Health, WHO, International Medical Corps and the Jordanian Nursing Council. The IOM medical team delivered tuberculosis (TB) awareness sessions for 1,073 refugees and members from the host community, screened 880 refugees for TB and administered vaccinations against polio, measles and with vitamin A.
- **Lebanon** - WHO, UNICEF, WFP and UNHCR planned for the second nutrition assessment in Lebanon for refugees and host communities. WHO is providing training on clinical management of casualties exposed to chemical hazards and distributing reference material addressing chemical hazards, including on the triage of exposed patients administration of antidotes by kind of chemical and the proper use of personal protective equipment to health care providers throughout Lebanon based on WHO guidelines. In coordination with International Orthodox of Christian Charities and UNICEF, a rapid assessment was conducted in Fayada, Bekaa, to identify the level of malnutrition of children between the ages of 6 months and 5 years residing in the informal tented settlement.



A young Syrian refugee receives a Vitamin A supplement during a UNICEF-supported measles and meningitis vaccination drive at Domiz camp in northern Iraq. UNICEF | S. Abdulmunem

The regional response for refugees fleeing Syria is the coordinated effort of 126 participating organizations, including 84 appealing:

ActionAid | [Action Contre la Faim](#) | Adventist Development and Relief Agency | [Agency for Technical Cooperation and Development](#) | The Lebanese Association for Development | [Lebanese Association for Human Promotion & Literacy](#) | Amel Association | [ARRD – Legal Aid](#) | Associazione Volontari per il Servizio Internazionale | [CARE International](#) | Caritas | [Caritas Lebanon Migrant Centre](#) | Catholic Relief Services | [Centre for Victims of Torture](#) | Cooperative Housing Foundation International | [Children without Borders](#) | Comitato Internazionale per lo Sviluppo dei Popoli | [Danish Refugee Council](#) | Finn Church Aid/Act Alliance | [FAO](#) | Fundacion Promocion Social de la Cultura | [GVC/Muslim Aid](#) | Handicap International | [Heartland Alliance International](#) | Institute for Family Health/Noor Al Hussein Foundation | [International Catholic Migration Commission](#) | International Medical Corps | [IOM](#) | International Orthodox Christian Charities | [International Relief and Development](#) | International Rescue Committee | [INTERSOS](#) | Islamic Relief Worldwide | [JEN](#) | Jesuit Refugee Service | [Jordan Health Aid Society](#) | LDS Charities | [Lebanese Red Cross](#) | Lutheran World Federation | [Madrasati Initiative](#) | Medair | [Médecins du Monde](#) | Mercy Corps | [Movement for Peace](#) | Nippon International Cooperation for Community Development | [Norwegian Refugee Council](#) | Operation Mercy | [Oxfam GB](#) | Première Urgence – Aide Médicale Internationale | [Qatar Red Crescent](#) | Questscope | [Refugee Education Trust](#) | Relief International | [Restart](#) | Rene Mouawad Foundation | [Royal Health Awareness Society](#) | Safadi Foundation | [Save the Children International](#) | Save the Children Jordan | [Social Humanitarian Economical Intervention for Local Development](#) | Solidarités International | [Terre des Hommes](#) | Terre des Hommes Italia | [Terre des Hommes Lausanne](#) | German Federal Agency for Technical Relief | [Un ponte per](#) | UNDP | [UNESCO](#) | UNFPA | [UN-Habitat](#) | UNHCR | [UNICEF](#) | UNODC | [UNOPS](#) | UNRWA | [UN Women](#) | War Child Holland | [WFP](#) | WHO | [World Rehabilitation Fund](#) | World Vision | [YMCA](#) |

Humanitarian response partners are invited to contribute to this report. For more information or to be added to the distribution list, please contact [Anna King](#), UNHCR Regional Reporting Officer | kinga@unhcr.org